

OIL WATER SEPARATORS – OWS SERIES

Application:

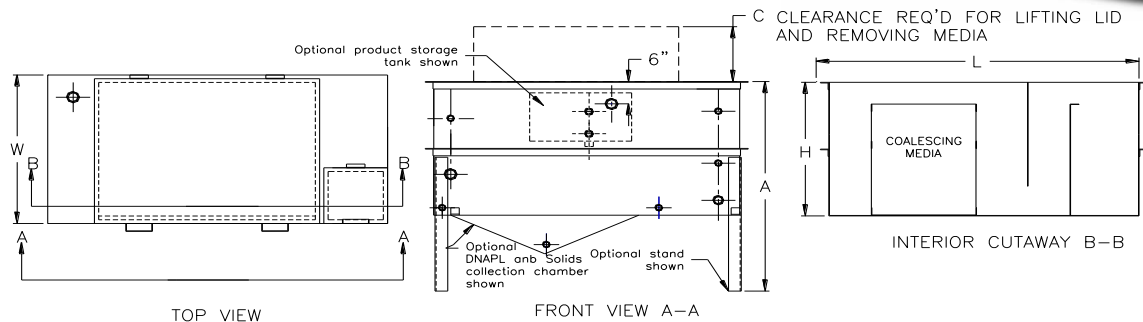
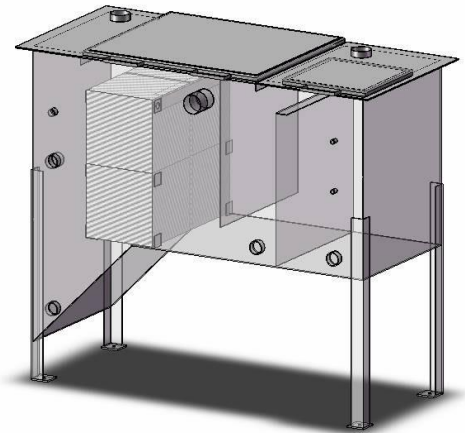
newterra Oil Water Separators are designed to remove oil from a liquid phase inlet stream. As the oil/water mixture is passed through the coalescing oil/water separator, larger oil droplets migrate to the surface to be collected and skimmed off. The coalescing media collects the smaller droplets until they are large and buoyant enough to float to the surface.

Construction:

The standard OWS Series are fabricated from carbon steel. For corrosion resistance, the interior is epoxy coated and the exterior is painted. Optional stainless steel construction is also available. A large lid allows access to the coalescing media and oil skimmer while a small lid allows access to the pump-out tank.

Standard Features:

- Standard finish: Interior is epoxy coated. Exterior is painted **newterra** blue over zinc primer (except stainless steel option)
- Sacrificial anode to prevent corrosion of tank.
- 11 AWG carbon steel construction
- Sludge containment section
- Adjustable oil skimmer
- Water underflow/overflow weir design
- Easy removal of coalescing media for cleaning
- High Alarm Level Coupling and Pump High/Low Level Coupling in the pump-out chamber



Dimension Chart:

Part Number	Width "W"	Standard Height "H"	Standard Overall Length	Shipping Weight [lbs]	Length with Extended Pump-out	Height with Elevated Pump-out "A"	Overhead Clearance "C"	Standard Pump-out Volume	Extended Pump-out Volume	Elevated Pump-out Volume	Product Tank Volume
OWS-2	16"	30"	64"	350	76"	n/a	14"	23 Gal	41 Gal	n/a	8.1 Gal
OWS-4	28"	30"	64"	450	76"	n/a	26"	46 Gal	81 Gal	n/a	8.1 Gal
OWS-8	28"	30"	76"	500	88"	n/a	26"	46 Gal	81 Gal	n/a	8.1 Gal
OWS-12	40"	30"	76"	650	88"	n/a	38"	70 Gal	122 Gal	n/a	8.1 Gal
OWS-18	40"	30"	88"	750	n/a	60"	24"	70 Gal	n/a	130 Gal	12.2 Gal
OWS-24	52"	30"	88"	950	n/a	60"	24"	93 Gal	n/a	173 Gal	12.2 Gal
OWS-36	52"	42"	88"	1050	n/a	72"	24"	133 Gal	n/a	212 Gal	17.8 Gal
OWS-45	64"	42"	88"	1300	n/a	72"	24"	166 Gal	n/a	265 Gal	17.8 Gal
OWS-72	100"	42"	88"	2050	n/a	72"	24"	266 Gal	n/a	425 Gal	17.8 Gal

OIL WATER SEPARATORS – OWS SERIES

Specification Chart:

Part Number	¼" Media (HD Q-PAC)		½" Media		¾" Media		1 ¼" Media		Slant Plate	
	Oil (0.9)	Gas (0.72)	Oil (0.9)	Gas (0.72)	Oil (0.9)	Gas (0.72)	Oil (0.9)	Gas (0.72)	Oil (0.9)	Gas (0.72)
OWS-2	9.7	27.0	5.0	14.1	3.5	9.8	2.3	6.3	0.9	2.5
OWS-4	19.3	54.0	10.1	28.2	7.0	19.7	4.5	12.7	1.8	4.9
OWS-8	38.6	108.1	20.2	56.5	14.0	39.3	9.1	25.4	3.5	9.8
OWS-12	57.9	162.1	30.3	84.7	21.1	59.0	13.6	38.1	5.3	14.7
OWS-18	86.9	243.2	45.4	127.1	31.6	88.4	20.4	57.1	7.9	22.1
OWS-24	115.8	324.2	60.5	169.5	42.1	117.9	27.2	76.1	10.5	29.5
OWS-36	159.2	445.8	68.1	190.7	47.4	132.6	30.6	85.7	11.8	33.2
OWS-45	199.0	557.3	85.1	238.4	59.2	165.8	38.2	107.1	14.8	41.5
OWS-72	318.5	891.7	136.2	381.4	94.7	265.3	61.2	171.3	23.7	66.3

Rated US GPM (Based on 25 micron particles at 65 deg F and design safety factor of 1.25)

Larger spaced coalescing media will not plug as quickly as closely spaced media allowing longer intervals between maintenance requirements. The coalescing slant plate should be used in applications with heavy sludge loads because it does not foul quickly.

Options Table:

Option	Description
Stand	The separator will be elevated above ground to assist in gravity discharge or to provide room underneath the separator for blowers and pumps. This replaces the standard foot mounts. The maximum stand height for 8' clearance is 36" for OWS-18 and OWS-24 and 24" for OWS-36 and larger.
Oversize Pump-out (Extended)	OWS-2, OWS-4, OWS-8 and OWS-12 only. The final section of the separator can be oversized to allow a greater water pump-out volume. For the OWS-2, OWS-4, OWS-8 and OWS-12 the oversized pump-out will be an extended length of the final section of the separator.
Oversize Pump-out (Elevated)	OWS-18, OWS-24, OWS-36 and OWS-45 only. The final section of the separator can be oversized to allow a greater water pump-out volume. For the OWS-18, OWS-24, OWS-36 and OWS-45 the separator will be raised on a stand and the final section will extend to the ground to give the oversized volume.
Top Inlet	A top mounted option is available to allow for pre-separation of air and liquid at the inlet to the separator.
Product Storage Tank	A tank may be mounted on the front of the separator to collect the oil from the skimmer. The volume of the product storage tank is: OWS-2, OWS-4, OWS-8 and OWS-12: 8.1 US Gal OWS-18, OWS-24: 12.2 US Gal OWS-36, OWS-45: 17.8 US Gal
Telerette Basket	A telerette basket may be added to allow for a high surface area polishing media for final hydrocarbon removal.
Oversize Inlet and Outlet	The inlet and outlet couplings may be increased by one size to allow for higher flow through the separator.
Stainless Steel	Each separator can be purchased with Stainless Steel construction instead of the standard Carbon Steel.
Main Tank Low Coupling	Additional couplings may be added to allow for the installation of a low level switch in the main separator tank. NOTE: This option covers only the cost of installing the coupling, the switches must be purchased separately.
Main Tank High Coupling	Additional couplings may be added to allow for the installation of a high level switch in the main separator tank. NOTE: This option covers only the cost of installing the coupling, the switches must be purchased separately.
Custom Size	A custom sized separator can be designed to meet specific project needs.
Media	Custom media available for contaminants other than oil/BTEX such as chlorinated solvents and other DNAPL products.
DNAPL Separation	The separator can be supplied with a DNAPL sump to capture heavy fluids and solids and allow collection below the media of the oil water separator.
Sample Ordering Format:	
OWS-4 with ½" Packing	
SG: 0.9	
Temp: 65 deg F	
Minimum Micron Size: 25	
Design Safety Factor: 1.25	
Options:	
Oversize Pumpout (Extended)	
Product Storage Tank	
Stand: 24"	